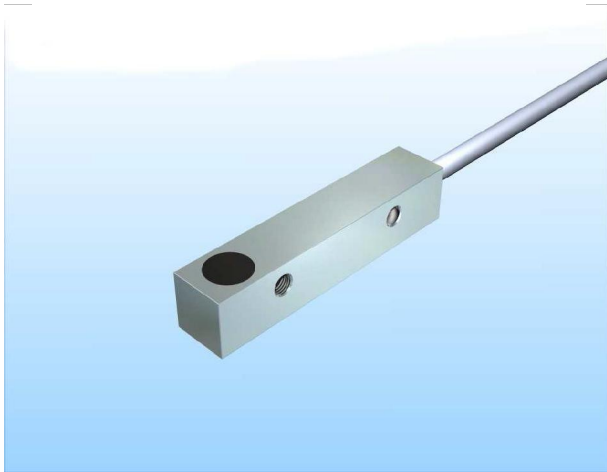
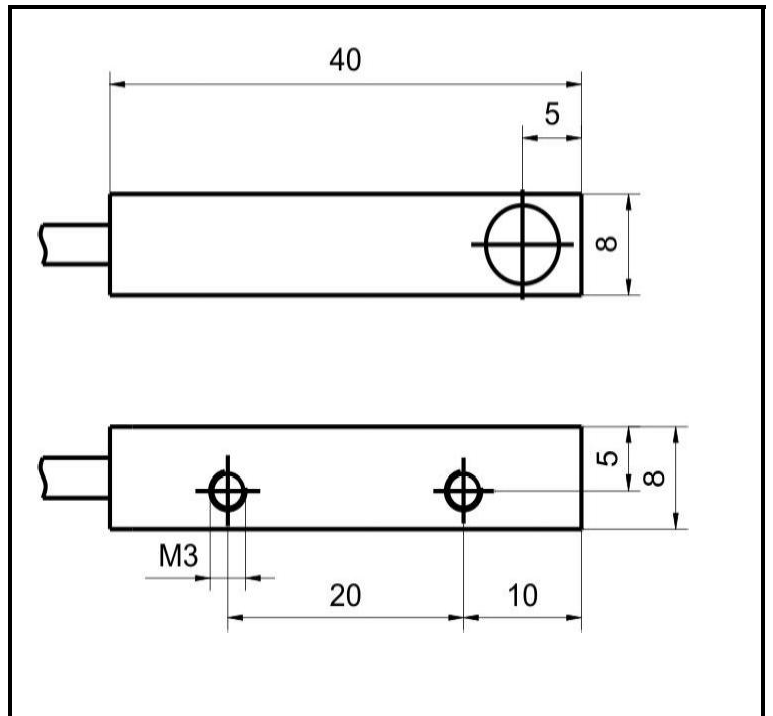


print and more

Pico 88-38/01



INDUCTIVE SENSORS



Rated Operating Distance	S_n	1,5 mm
Mounting		shielded
Output		3-wire PNP N.O.
Order Number		801.183
Operating Voltage	U _b	10 - 30 V DC
max. Ripple of Operating Voltage		≤ 10 %
Voltage Drop		≤ 2.4 V
max. Load Current	I _e	200 mA
No Load Current	I ₀	≤ 10 mA
Leakage Current	I _r	≤ 10 μA
max. Switching Frequency	f	1000 Hz
Time Delay before Availability		≤ 50 ms
Short Circuit / Reverse Polarity Protection		yes / yes
Hysteresis	H	≤ 15 %
EMC - Level Shock / Vibration		acc. DIN EN 60947-5-2: 2008
Assured Operating Distance	■	1,215 mm
Temperature Drift		≤ 10 %
Repeat Accuracy	R	≤ 10 %
Protection Degree		IP 67 acc. DIN EN 60529
Indication of the Switching State		NO
Ambient Temperature	T _a	- 25°C ... + 100°C
Design		square 8x8x40 mm
Housing Material		nickel plated brass
Material of Active Area		PA 6.6
Kind of Termination		2,5m cable PVC grey LIfYwYw 3x0.14 mm ²
Utilization Category		DC 13
MTTF / FIT (acc. Siemens-Standard 29500)		2369 / 48,19

Wiring Diagram:

